



Betsie Valley Trail

“A Benzie County jewel that connects the towns of Frankfort, Elberta, Beulah, and Thompsonville.”



The Betsie Valley Trail was built on the bed of the former Ann Arbor Railroad

- From 1892 until 1951, passengers enjoyed transport from Toledo to Frankfort
- Freight trains continued to travel the route through 1985
- By 1994, tracks and ties were removed

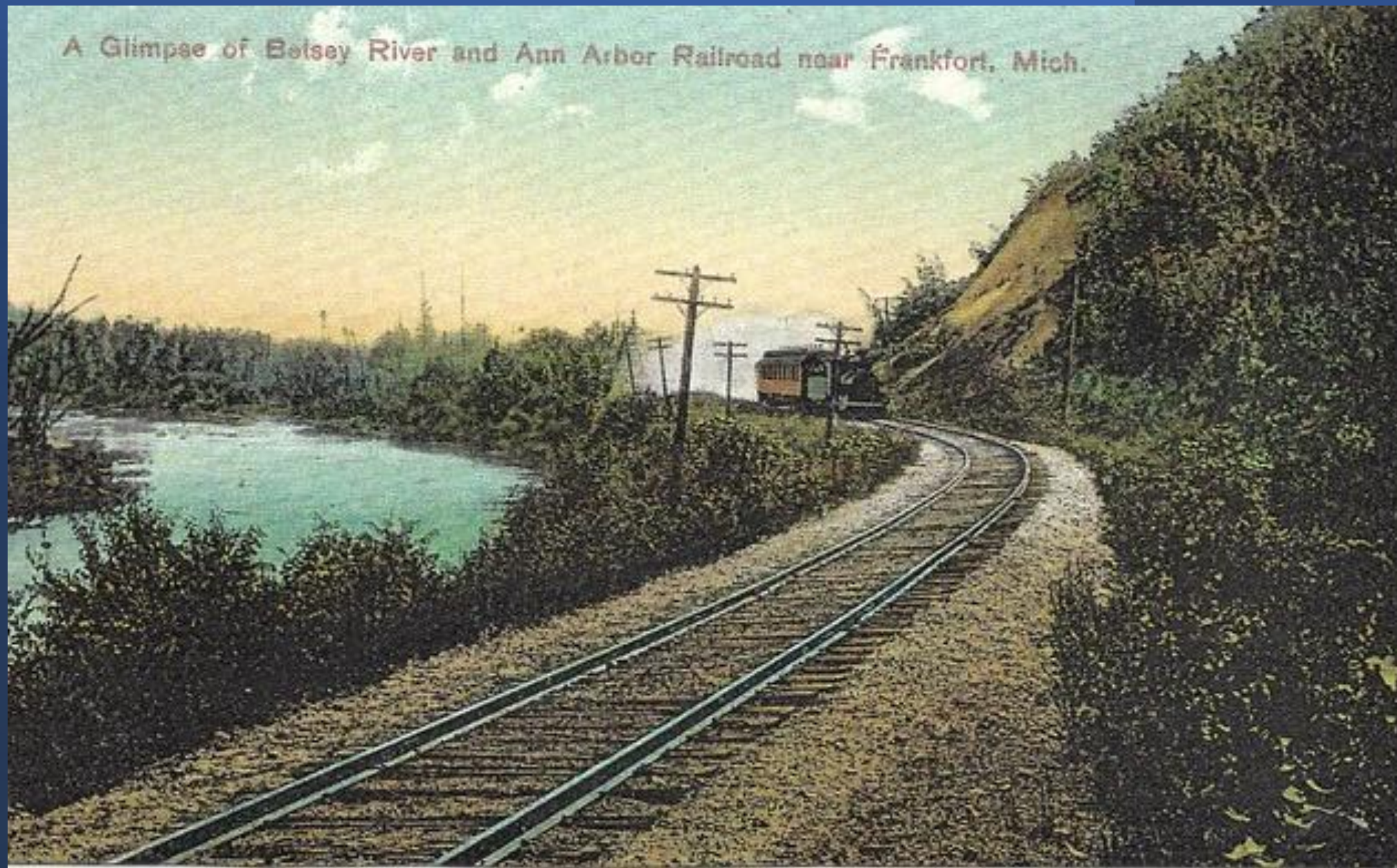


BETSIE
VALLEY
TRAIL





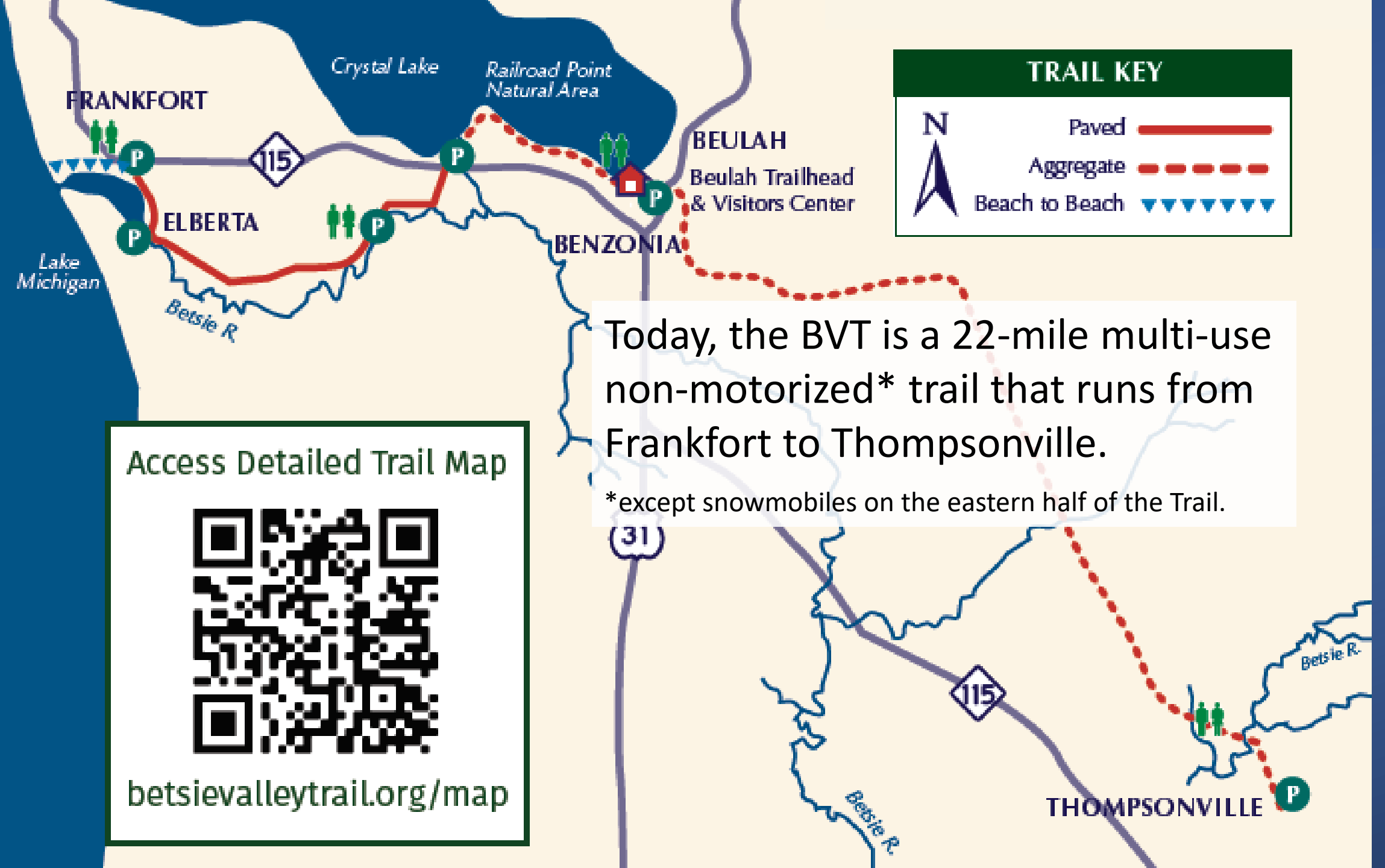
A Glimpse of Betsy River and Ann Arbor Railroad near Frankfort, Mich.











Today, the BVT is a 22-mile multi-use non-motorized* trail that runs from Frankfort to Thompsonville.

*except snowmobiles on the eastern half of the Trail.

Access Detailed Trail Map



betsievalleytrail.org/map

Access to Our Area's Natural Resources

The Trail allows access to a vast diversity of wildlife and environments, including:

- Dunes of Lake Michigan Beach
- Betsie Bay
- The Betsie River and Betsie River State Game Area
- Crystal Lake Township Natural Area
- Crystal Lake Outlet



BETSIE
VALLEY
TRAIL



Access to Our Area's Natural Resources

The Trail allows access to a vast diversity of wildlife and environments, including:

- Railroad Point Natural Area
- Crystal Lake – Michigan's 9th largest inland lake and a designated trout lake
- Beulah Beach
- Pere Marquette State Forest



BETSY
VALLEY
TRAIL



The Impact of the Pandemic

- Over the past two years, we have seen a dramatic increase in the use the Betsie Valley Trail.
- Other area recreational opportunities (Sleeping Bear Dunes National Lakeshore and TART Trails) have also experienced record use and visitor levels.





Trails bring families, tourists and economic benefit to the area with minimal negative impacts on traffic and parking during our busy summer season.

Facts about the Betsie Valley Trail

- The Trail right-of-way is owned by the Michigan DNR.
- The Trail is managed by Benzie County through the appointment of the Betsie Valley Trailway Management Council.



BETSIE
VALLEY
TRAIL



Facts about the Betsie Valley Trail

- The Betsie Valley Trail is a collaborative effort.

Betsie Valley Trailway Management Council:

Benzie County

City of Frankfort

Crystal Lake Property Rights Association

Department of Natural Resources

Friends of the Betsie Valley Trail

Villages of Beulah, Elberta &

Thompsonville



BETSIE
VALLEY
TRAIL



Facts about the Betsie Valley Trail

- No local tax dollars are used to support the Trail. The Friends are totally dependent on donations, grants, and the efforts of our volunteers.



BETSIE
VALLEY
TRAIL



Facts about the Betsie Valley Trail

- We are the Friends of the Betsie Valley Trail. A 501(c)3 charitable organization whose sole purpose is to foster the development and successful operation of the Trail.
- The Friends provide financial, promotional, volunteer labor and supervisory support for the Trail.



BETSIE
VALLEY
TRAIL





Friends volunteers promote the Trail at local fairs and raise funds.



- The running portion of the inaugural event in 2021 was held on a portion of the Trail
- Local triathlete, Frederik Stig-Neilsen represented and raised funds for the Friends.
- The Friends earned nearly \$5,000 from this event.




- Friends volunteers are always working to improve the Betsie Valley Trail.
- Hundreds of volunteer hours are dedicated to maintaining and enhancing the Trail each year.



Our volunteer grants team devotes many hours applying for various grant opportunities.





BETSIE VALLEY TRAIL

Biking and hiking the Betsie Valley Trail Is a favorite activity for visitors and residents of Benzie County.

With 22 miles of improved surface along lakes, rivers, over bridges and through forests, the Trail is one of the most beautiful recreational trails in the country.

Learn more and watch a video tour at:
BetsieValleyTrail.org

Printed Materials



Trail Sees Record Use

This year started out with great uncertainty, yet it was a summer that saw more visitors to our region than ever before.



COVID-19 & Flooding Make for a Year of Challenges



We Need Community Support Now More than Ever!

Many who use the Betsie Valley Trail are unaware that no local tax dollars are used to support the trail. We are totally dependent on donations, grants, and the fantastic efforts of our valued volunteers. As a result, even in the best of times, the trail has always operated on a proverbial shoestring.

Now, with the pandemic and a freeze on state spending, we can no longer count on operating funds which in the past were never in question. This has immediately impacted our trail reconstruction work along a 1½ mile segment along Crystal

Drive (see article on page 2). We were expecting to get started with this work by now, however the \$150,000 DNR grant, which we were awarded earlier this year, is being held up. Now the reconstruction work is on an indefinite hold.

You may notice this year's newsletter does not include the fun pictures of all the wonderful fundraising events we love reporting on each year. That means we'll be missing out on these much needed operating funds. Please help us to keep the trail open for all. Renew your membership and send us your donation in the provided pledge envelope. As always, thank you for your support!

Facts about the Betsie Valley Trail

- The trail right-of-way is owned by the Michigan DNR. The trail is managed by Benzie County through the appointment of the Betsie Valley Trailway Management Council.

- We are the Friends of the Betsie Valley Trail, a qualified charitable organization, who provides financial, fund raising, and promotional support for the trail.



Facts about the Trail

- The trail right-of-way is owned by the Michigan DNR. The trail is managed by Benzie County through the appointment of the Betsie Valley Trailway Management Council.
- We are the Friends of the Betsie Valley Trail, a qualified charitable organization, who provides financial, fund raising, and promotional support for the trail.
- No local tax dollars: Friends are totally committed and the fantastic effort of the trail.



Resurfacing the trail along Crystal Lake last spring represented the first major upgrade of the trail in decades...and we're just getting started!

The Friends have been working hard the past couple years to build the capabilities of our organization. We've added several new board members and staff who are actively managing projects and taking on important responsibilities.

We're also in the midst of developing a new vision and mission for the trail that will look well into the future of recreational and non-motorized transportation in our region and beyond.

We are actively seeking \$2 million in funding.

We are actively seeking \$2 million in funding to pave the 12-mile segment of the trail from the trailhead in Beulah south to Thompsonville.

The dedication of the historical marker in Thompsonville last summer recognized the important role the "Diamond Crossing" and "The biggest little town in Michigan" played in the economic development of northern Michigan over a century ago.

Our vision is to recapture the importance of Thompsonville as a crossroads - in the past for rail and in the future for non-motorized transportation.

New and existing trails-to-trails will someday take users northeast to Interlochen, southeast to Mesick/Cadillac, and southwest to Manistee/Ludington - eventually connecting entire lower Michigan.



The future vision illustrated above indicates why Thompsonville will again serve as a critical crossroads in northwest lower Michigan.

TRAIL MAP



BETSIE VALLEY TRAIL

Emergencies: 911
Benzie County Sheriff: 231-882-4484
Trail Issues: bvtcare@gmail.com

Friends of the Betsie Valley Trail
PO Box 474 | Beulah, MI 49617
www.betsievalleytrail.org
info@betsievalleytrail.org

Press and TV Coverage

RECORD PATRIOT
112nd Year - No. 3
Wednesday - Jan. 20, 2021 - \$1
recordpatriot.com

Bestie Valley Trail to see repairs, upgrades
Trail use doubled in 2020. 'People are looking for ways to get outside'

Deisch to leave county administrator position
COMPILED BY COLIN MERRY
cmerry@pioneergroup.com

BENZIE COUNTY — Benzie County Administrator Mitch Deisch has given the Benzie County Board of Commissioners a letter of intent to resign from his position at the end of August.

"Along with all the good memories, there were some really challenging memories and long-term memories," Deisch wrote in his letter. "At the end of a long career, these challenging memories fade away and you focus on the good times and all the people you have worked with."

Deisch

TRAILBLAZER

How One Man Helped Capture The Beauty of Benzie County

By Tom Rademacher

Over the course of several decades, he created the reputation as a shill of creating fresh starts for people. But in northwest Lower Michigan, he is remembered for the way he reached out to people and communities in order to create a monument in perpetuity to the beauty of the region.

The first project is already underway: a new overlook at the site of the former Lewis Road bridge along the trail near the Adams Road trailhead. The project includes improvements to the overlook's overall accessibility, including stairs and a handicap accessibility ramp. There also will be benches.

Site preparation has also begun for the project.



Bestie Valley Trail

Jim Gribble of the Bestie Valley Trail, says the resurfacing project along Crystal Lake has been completed. The hard-packed limestone surface was funded by a \$150,000 DNR Recreation Passport Grant.

The organization's newest priority is from Beulah to Thompsonville. "That part has never gotten attention, but the organization envisions it as part of a Thompsonville revitalization project, eventually connecting with the TART Trail from Interlochen to Thompsonville. "The railway right of way is already there," says Gribble, noting that Thompsonville used to be the hub of two major rail lines.

By Tom Rademacher

Over the course of several decades, he created the reputation as a shill of creating fresh starts for people. But in northwest Lower Michigan, he is remembered for the way he reached out to people and communities in order to create a monument in perpetuity to the beauty of the region.

The first project is already underway: a new overlook at the site of the former Lewis Road bridge along the trail near the Adams Road trailhead. The project includes improvements to the overlook's overall accessibility, including stairs and a handicap accessibility ramp. There also will be benches.

Site preparation has also begun for the project.



JIM GRIBBLE
PUBLIC RELATIONS, FRIENDS OF THE BETSIE VALLEY TRAIL

Role of DNR recognized in Betsie Valley Trail resurfacing

Wednesday, Aug. 25, 2021 - Benzie County Record Patriot

COLIN MERRY
cmerry@pioneergroup.com

BEULAH — The Department of Natural Resources was honored by a local trail group for its role in helping fund the resurfacing of a popular Benzie County walking and biking path.

The Friends of the Betsie Valley Trail held a dedication ceremony for the trail on August 13 in Beulah. During this ceremony, a sign noting that the DNR had provided a \$150,000 Recreation Passport Grant to make the repairs was unveiled.

Speakers at the event included Jed Maker, board president of the Friends of the Betsie Valley Trail; John Wheeler, president of the Crystal Lake Property Rights Association; Charlie Gregory, trail care coordinator; and Doug Barry, supervisor for the DNR.

"No tax dollars were used, just those recreational passport dollars," said Jim Gribble, director of marketing and public relations for Friends of the Betsie Valley Trail.

Gribble said project leaders were instrumental in getting the project moving along.

"Special thanks and recognition go out to the leaders of the project, David Oellerich, former president of the Friends of the Betsie Valley Trail; John Wheeler, president of the Crystal Lake Property Rights Association; and Doug Barry, supervisor for the DNR."

"It was really nice to work with CLPRA and have their support," Gribble said. "One of the things we needed help with was getting access to the trail at some points. Either side is private



Jed Maker, board president of the Friends of the Betsie Valley Trail, unveils a sign recognizing the Department of Natural Resources' Recreation Passport Grant used to help resurface a worn portion of the trail along Crystal Lake. (Courtesy photo)

Betsie Valley Trail resurfacing work along Crystal Avenue begins

COMPILED BY COLIN MERRY
cmerry@pioneergroup.com

BEULAH — In January 2020, the Friends of the Betsie Valley Trail (FBVT) were awarded a \$150,000 DNR Recreation Passport grant to resurface the BVT along Crystal Lake.

The group raised the required \$80,000 in matching funds, but due to several factors, the project was delayed until 2021.

The Friends recently announced that the resurfacing work has begun and should be completed prior to Memorial Day weekend. Key players in the project met in April at the Beulah Visitor's Center to finalize work plans, including Tyler Sprague, landscape architect from Johnson-Hill; Jeff Cockfield, professional engineer who is working with Johnson-Hill to oversee the work; project manager and former trail care coordinator, John Rothhaar; Charlie Gregory, trail care coordinator; and Janelle and AJ Zirkel of AJ's Excavating.

David Oellerich, the manager of the project and former president of the Betsie Valley Trailway Management Council, was also involved.

"I'm very pleased and grateful that this improvement project is finally being completed," said Rothhaar. "The Crystal Lake segment of the trail along Crystal Avenue has needed significant attention for many years, and the process of planning, obtaining approvals, and lining up funding took much longer than we might have hoped."

The improved trail surface should make for a much better experience for trail users and encourage them to use the trail rather than the street, which, along with the improved appearance, should be a benefit to landowners along the trail, as well."

Everyone associated with



A section of the Betsie Valley Trail along Crystal Avenue will be getting some repairs, and should be ready for use by the end of May. (Courtesy photo)

Friends of the Betsie Valley Trail get boost from Mountain Dew

\$5,000 grant to go toward storage facility at trailhead

By Colin Merry
cmerry@pioneergroup.com

BENZIE COUNTY — The Friends of the Betsie Valley Trail are closer to being able to purchase and equip a storage facility to make it easier to maintain a popular section of the trail.

On Jan. 14, the organization announced in an email and on its website that Mountain Dew was the recipient of a \$5,000 grant. The Friends was one of the organizations from across the county that received a grant.

Mountain Dew also issued an announcement on its website that the Betsie Valley Trail was selected as a grant winner for its incredible local impact in Beulah through community efforts that include maintaining a 22-mile year-round recreational trail through Frankfort and Thompsonville in Benzie County in northwest Lower Michigan.

The Friends also had received a \$2,000 grant from the Benzie Foundation.

The group is now looking for a 22-mile by 22-inch precast storage facility, according to its website. The cost of the storage facility is \$50,000.

The website also says the storage facility will have electrical hookups and will be equipped with tools to help maintain the trail. It will be located at the Adams Road trailhead for the Betsie Valley Trail.

The Friends of the Betsie Valley Trail received a \$5,000 grant to help purchase a storage facility. Pictured (from left to right) are Charlie Gregory, Department of Natural Resources and Fred Strandsky, manager of the storage facility project.

CONGRATULATIONS

Mountain Dew Outdoor Grant. The Friends was one of the organizations from across the county that received a grant.

Mountain Dew also issued an announcement on its website that the Betsie Valley Trail was selected as a grant winner for its incredible local impact in Beulah through community efforts that include maintaining a 22-mile year-round recreational trail through Frankfort and Thompsonville in Benzie County in northwest Lower Michigan.

The Friends also had received a \$2,000 grant from the Benzie Foundation.

The group is now looking for a 22-mile by 22-inch precast storage facility, according to its website. The cost of the storage facility is \$50,000.

The website also says the storage facility will have electrical hookups and will be equipped with tools to help maintain the trail. It will be located at the Adams Road trailhead for the Betsie Valley Trail.

THE BETSIE CURRENT NEWSPAPER
News • Events • Calendar • Stories • Benzie County

2014, BIKING, FEATURED STORIES, PRINT EDITIONS, SPORTS

Biking and Hiking the Betsie Valley Trail
By Kelly Ottinger
July 17, 2014

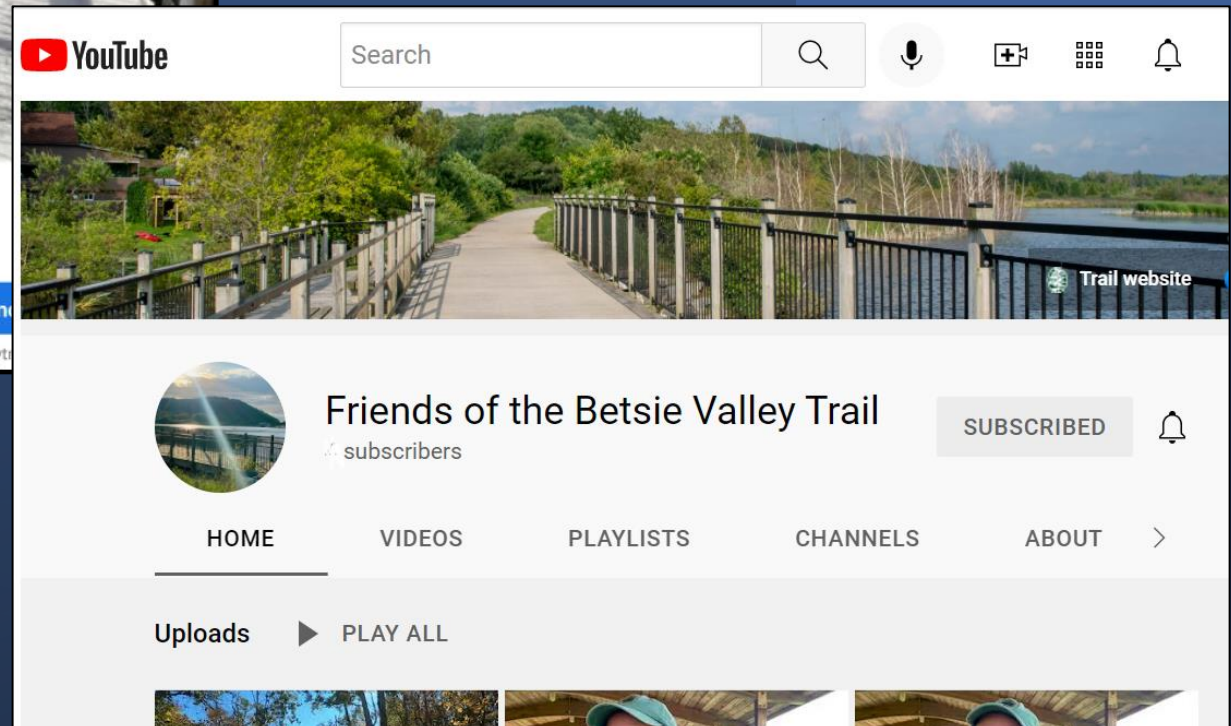
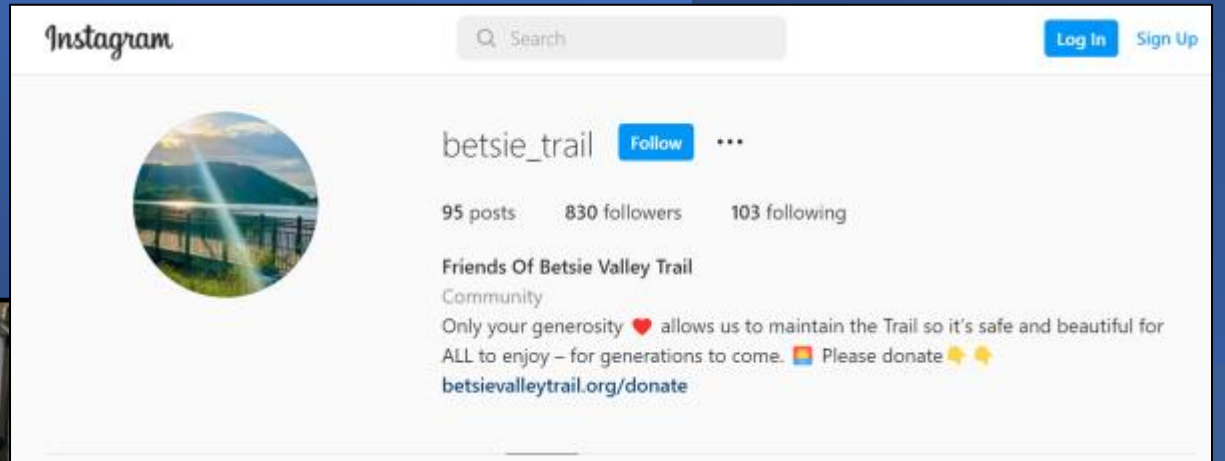
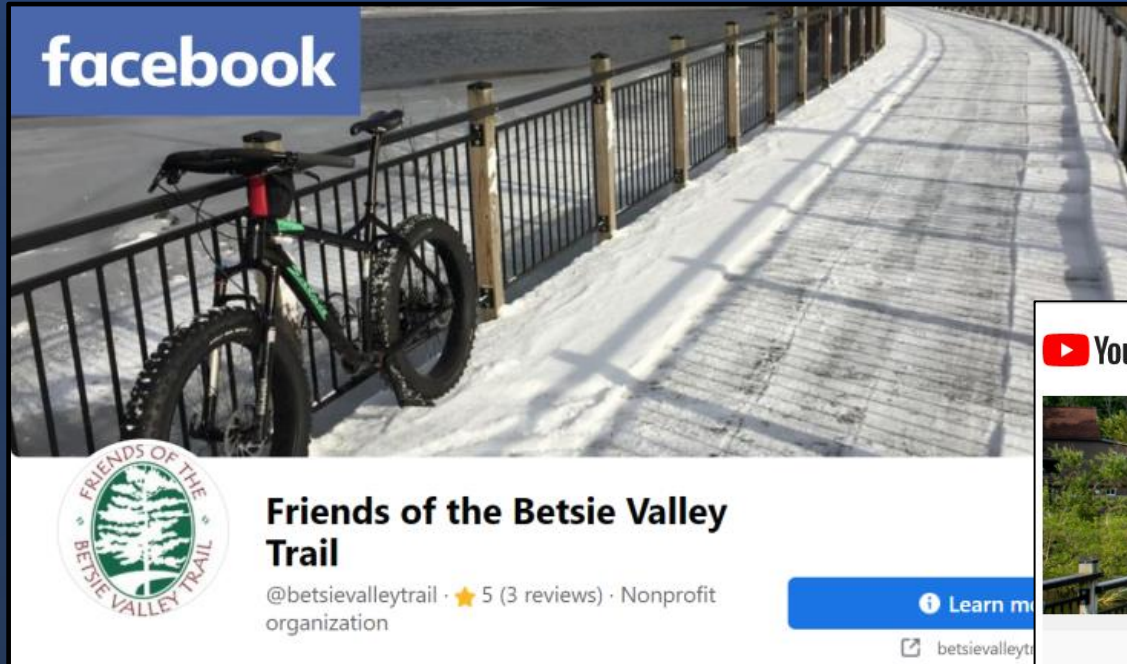
122 years after construction, the trail shows thoughtful vision

NO MOTOR VEHICLES



JIM GRIBBLE
PUBLIC RELATIONS, FRIENDS OF THE BETSIE VALLEY TRAIL

Social Media



- Website Blog Articles
- e-mail Newsletters



Our Projects...

Resurfacing along Crystal Avenue

- Friends awarded a \$150k DNR Recreation Passport Grant
- Friends raised \$50k in required matching funds
- Resurfacing with hard-packed limestone took place in May 2021
- Work performed by local contractor AJ's Excavating



Improved Safety at M-115 Intersection

- The Friends raised the funds needed to install solar-powered flashing stop signs on either side of the intersection.

New Storage Facility



"Having a mower, blower, and tool chest along the trail will give us a far greater ability to perform regular clean-up and improvement projects for which we currently must contract – it'll be an immediate as well as ongoing cost savings."

*-- Charlie Gregory
Trail Care Coordinator*



“Having a home for our equipment and supplies adjacent to the trail is a game-changer for Joy2Ride!”

Carol Kraak, Director

New Storage Facility



We will purchase
a prefabricated
building 16'x32'

- Friends launched a fundraiser in January and we're happy to announce we have surpassed our goal!
- Friends will build the storage facility at the River Road parking and trailhead site.



Paving the Trail from Beulah to Thompsonville

- This segment of the Trail remains dramatically underutilized and has experienced no increase in usage over the past couple years.
- At the same time, usage of the paved section of the Trail has nearly doubled.

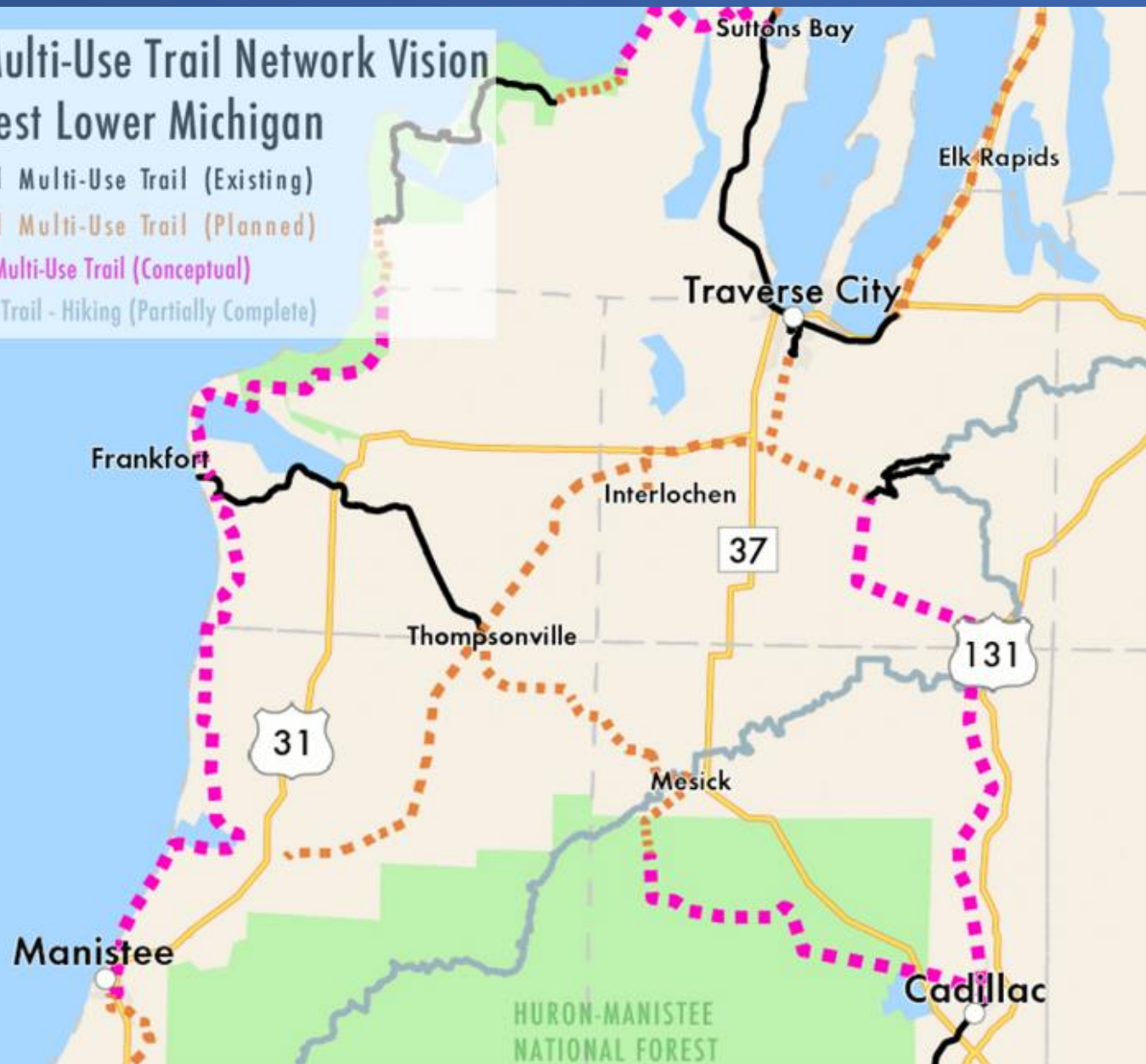
A photograph of a gravel trail, showing a rough, uneven surface composed of small stones and dirt. The trail is flanked by dry, scrubby vegetation. The image is used as a background for the presentation slide.

Paving the Trail from Beulah to Thompsonville

- The gravel trail is rough and unwelcoming to most trail users
- Complete plans for trail resurfacing have been drawn
- The project is shovel-ready with minimal preparatory surface work required prior to asphaltting

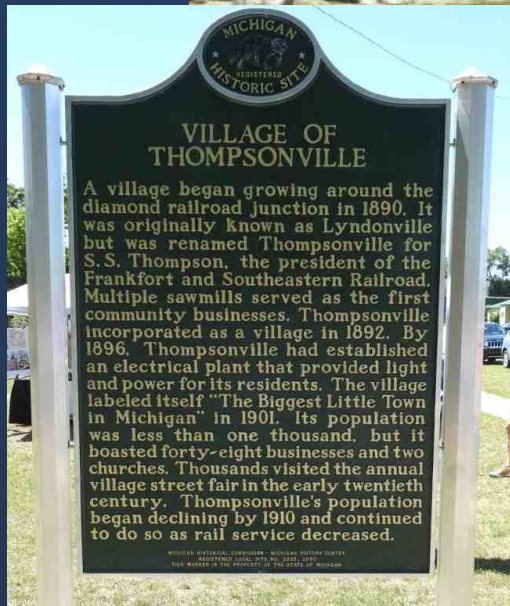
Regional Multi-Use Trail Network Vision for Northwest Lower Michigan

- Regional Multi-Use Trail (Existing)
- Regional Multi-Use Trail (Planned)
- Regional Multi-Use Trail (Conceptual)
- Iron Belle Trail - Hiking (Partially Complete)



Our vision is to recapture the importance of Thompsonville as a crossroads – in the past for rail and in the future for non-motorized transportation.

Historical Marker Dedication



There is overwhelming support to complete the Trail to Thompsonville.

Virtually all Benzie County government entities have adopted, or will soon adopt, a Resolution of Support for this project.



March 2, 2022

Resolution #2022-01

A RESOLUTION TO SUPPORT PAVING THE BETSIE VALLEY TRAIL FROM BEULAH TO THOMPSONVILLE

WHEREAS, the 22-mile Betsie Valley Trail connects the cities and villages of Benzonia, Beulah, Elberta, Frankfort, and Thompsonville, and the townships of Benzonia, Crystal Lake, Gilmore, and Weldon; and
WHEREAS, in 2003 a 10-mile section of the Betsie Valley Trail between Crystal Lake and Frankfort was paved with donations and grants from Benzie County residents, trail users, the Michigan Department of Natural Resources, and others; and
WHEREAS, the 12-mile segment from Beulah to Thompsonville remains unpaved and its current mixed dirt/gravel surface is not accessible to users with disabilities, many bicyclists, people with strollers, rollerbladers, and young children; and
WHEREAS, while use of the paved and resurfaced portions of the Betsie Valley Trail has increased markedly since 2019, the Beulah to Thompsonville segment has experienced no noticeable increase in usage; and
WHEREAS, paving the trail from Beulah to Thompsonville will provide access for all types of non-motorized trail use, enhance users' recreation experience, and increase usage of the Betsie Valley Trail; and
WHEREAS, the Township of Benzonia recognizes the Betsie Valley Trail's contribution to Benzie County's economy and quality of life, and supports paving the trail's entire length; now
THEREFORE, BE IT RESOLVED, that the Township of Benzonia supports paving the remaining 12 miles of the Betsie Valley Trail between the Village of Beulah and the Village of Thompsonville.


Jason Barnard,
Supervisor, Benzonia Township

supervisor@benzoniatownship.org

A RESOLUTION TO SUPPORT PAVING THE BETSIE VALLEY TRAIL FROM BEULAH TO THOMPSONVILLE

WHEREAS, Governor Whitmer proposes to allocate up to \$250 million of American Rescue Plan Act dollars for essential infrastructure improvements to State Parks and Trails to boost local economies and enhance tourism; and

WHEREAS, the 22-mile Betsie Valley Trail connects the cities and villages of Benzonia, Beulah, Elberta, Frankfort, and Thompsonville, and the townships of Benzonia, Crystal Lake, Gilmore, and Weldon; and

WHEREAS, in 2003 a 10-mile section of the Betsie Valley Trail between Crystal Lake and Frankfort was paved with donations and grants from Benzie County residents, trail users, the Michigan Department of Natural Resources, and others; and

WHEREAS, the 12-mile segment from Beulah to Thompsonville remains unpaved and its current mixed dirt/gravel surface is not accessible to users with disabilities, many bicyclists, people with strollers, rollerbladers, and young children; and

WHEREAS, while use of the paved and resurfaced portions of the Betsie Valley Trail has increased markedly since 2019, the Beulah to Thompsonville segment has experienced no noticeable increase in usage; and

WHEREAS, paving the trail from Beulah to Thompsonville will provide access for all types of non-motorized trail use, enhance users' recreation experience, and increase usage of the Betsie Valley Trail; and

WHEREAS, the City of Frankfort recognizes the Betsie Valley Trail's contribution to Benzie County's economy and quality of life, and supports paving the trail's entire length; now

THEREFORE, BE IT RESOLVED, that the City of Frankfort encourages our Governor and Michigan Legislators to appropriate \$2 million from the state's American Rescue Plan Act funding to pave the remaining 12 miles of the Betsie Valley Trail from the Village of Beulah south to the Village of Thompsonville.

AYES: Holwede, Olsen, Shortt, Widenia

NAYES: NONE

ABSENT: Stratton

I HEREBY CERTIFY, that the foregoing is a Resolution duly made and passed by the Frankfort City Council at a Special meeting held January 31, 2022.


Christine Spence, Clerk/Treasurer

Dated: January 31, 2022

2022-008

A RESOLUTION TO SUPPORT PAVING THE BETSIE VALLEY TRAIL FROM BEULAH TO THOMPSONVILLE

WHEREAS, Governor Whitmer proposes to allocate up to \$250 million of American Rescue Plan Act dollars for essential infrastructure improvements to State Parks and Trails to boost local economies and enhance tourism; and

WHEREAS, the 22-mile Betsie Valley Trail connects the cities and villages of Benzonia, Beulah, Elberta, Frankfort, and Thompsonville, and the townships of Benzonia, Crystal Lake, Gilmore, and Weldon; and

WHEREAS, in 2003 a 10-mile section of the Betsie Valley Trail between Crystal Lake and Frankfort was paved with donations and grants from Benzie County residents, trail users, the Michigan Department of Natural Resources, and others; and

WHEREAS, the 12-mile segment from Beulah to Thompsonville remains unpaved and its current mixed dirt/gravel surface is not accessible to users with disabilities, many bicyclists, people with strollers, rollerbladers, and young children; and

WHEREAS, while use of the paved and resurfaced portions of the Betsie Valley Trail has increased markedly since 2019, the Beulah to Thompsonville segment has experienced no noticeable increase in usage; and

WHEREAS, paving the trail from Beulah to Thompsonville will provide access for all types of non-motorized trail use, enhance users' recreation experience, and increase usage of the Betsie Valley Trail; and

WHEREAS, the County of Benzie recognizes the Betsie Valley Trail's contribution to Benzie County's economy and quality of life, and supports paving the trail's entire length; now

THEREFORE, BE IT RESOLVED, that the County of Benzie encourages our Governor and Michigan Legislators to appropriate \$2 million from the state's American Rescue Plan Act funding to pave the remaining 12 miles of the Betsie Valley Trail from the Village of Beulah south to the Village of Thompsonville.

Dated: February 22, 2022


Bob Roelofs, Chair

I, Dawn Olney, Benzie County Clerk and Clerk to the Benzie County Board of Commissioners, do hereby certify that the above resolution was adopted by the Benzie County Board of Commissioners on February 22, 2022.

Dated: February 22, 2022


Dawn Olney, Benzie County Clerk

Crystal Lake Township
1651 Frankfort Highway
PO Box 2129
Frankfort, MI 49635-2129

Resolution Number: 2-15-2022 #07

Date: 2-15-2021

Resolution to Support paving BVT from Beulah to Thompsonville

WHEREAS, Governor Whitmer proposes to allocate up to \$250 million of American Rescue Plan Act dollars for essential infrastructure improvements to State Parks and Trails to boost local economies and enhance tourism; and

WHEREAS, the 22-mile Betsie Valley Trail connects the cities and villages of Benzonia, Beulah, Elberta, Frankfort, and Thompsonville, and the townships of Benzonia, Crystal Lake, Gilmore, and Weldon; and

WHEREAS, in 2003 a 10-mile section of the Betsie Valley Trail between Crystal Lake and Frankfort was paved with donations and grants from Benzie County residents, trail users, the Michigan Department of Natural Resources, and others; and

WHEREAS, the 12-mile segment from Beulah to Thompsonville remains unpaved and its current mixed dirt/gravel surface is not accessible to users with disabilities, many bicyclists, people with strollers, rollerbladers, and young children; and

WHEREAS, while use of the paved and resurfaced portions of the Betsie Valley Trail has increased markedly since 2019, the Beulah to Thompsonville segment has experienced no noticeable increase in usage; and

WHEREAS, paving the trail from Beulah to Thompsonville will provide access for all types of non-motorized trail use, enhance users' recreation experience, and increase usage of the Betsie Valley Trail; and

WHEREAS, the Township of Crystal Lake recognizes the Betsie Valley Trail's contribution to Benzie County's economy and quality of life, and supports paving the trail's entire length; now

HEREFORE, BE IT RESOLVED, that the Township of Crystal Lake encourages our Governor and Michigan Legislators to appropriate \$2 million from the state's American Rescue Plan Act funding to pave the remaining 12 miles of the Betsie Valley Trail from the Village of Beulah south to the Village of Thompsonville.

Moved by: Supervisor Ferris and Seconded by: Clerk Sullivan

Roll Call Vote:

Amy Ferris, Supervisor: Yes

Richard Nielsen, Trustee: Yes

William Northway, Trustee: Yes

Sue Sullivan, Clerk: Yes

Brooke Trentham Popp, Treasurer: Yes

The supervisor declared this motion carried and duly adopted.

Village of Elberta
Resolution #2022-01

RESOLUTION TO SUPPORT PAVING THE BETSIE VALLEY TRAIL FROM BEULAH TO THOMPSONVILLE

WHEREAS, Governor Whitmer proposes to allocate up to \$250 million of American Rescue Plan Act dollars for essential infrastructure improvements to State Parks and Trails to boost local economies and enhance tourism; and

WHEREAS, the 22-mile Betsie Valley Trail connects the cities and villages of Benzonia, Beulah, Elberta, Frankfort, and Thompsonville, and the townships of Benzonia, Crystal Lake, Gilmore, and Weldon; and

WHEREAS, in 2003 a 10-mile section of the Betsie Valley Trail between Crystal Lake and Frankfort was paved with donations and grants from Benzie County residents, trail users, the Michigan Department of Natural Resources, and others; and

WHEREAS, the 12-mile segment from Beulah to Thompsonville remains unpaved and its current mixed dirt/gravel surface is not accessible to users with disabilities, many bicyclists, people with strollers, rollerbladers, and young children; and

WHEREAS, while use of the paved and resurfaced portions of the Betsie Valley Trail has increased markedly since 2019, the Beulah to Thompsonville segment has experienced no noticeable increase in usage; and

WHEREAS, paving the trail from Beulah to Thompsonville will provide access for all types of non-motorized trail use, enhance users' recreation experience, and increase usage of the Betsie Valley Trail; and

WHEREAS, the Village of Elberta recognizes the Betsie Valley Trail's contribution to Benzie County's economy and quality of life, and supports paving the trail's entire length; now

THEREFORE, BE IT RESOLVED, that the Village of Elberta encourages our Governor and Michigan Legislators to appropriate \$2 million from the state's American Rescue Plan Act funding to pave the remaining 12 miles of the Betsie Valley Trail from the Village of Beulah south to the Village of Thompsonville.


Jennifer Wilkins, President

1-20-2022

MOTION
1st: Jen Wilkins
2nd: Bill Soper
AYES - 3 NAYS - 0

“The improvements planned for the trail will not only make it more accessible to people with disabilities, seniors, and families, but will be an asset to the community...Additionally, paving this trail provides future opportunities to connect with Traverse City’s TART trail system, giving more inclusive opportunities for accessible trail use...We are very excited for the proposed changes which will not only benefit all persons who visit this section of the trail but will also truly facilitate a diverse community of people.”

*-- Alanna M. Lahey, JD, Associate Director
Disability Network Northern Michigan*

Excerpt from letter of support dated March 28, 2022





“As part of Northern Michigan's largest Healthcare system, Paul Oliver Memorial Hospital understands the importance of healthy recreation and outdoor activity for the overall health of our communities. I enthusiastically support this project and look forward to an improved Betsie Valley Trail.”

*-- James Barker,
CEO & South Region President*

Excerpt from letter of support dated January 27, 2022

“Paving the 12 miles between Beulah and Thompsonville would provide greater access for persons of all abilities to enjoy the Trail. There is strong grassroots support for trail development based on enhancing the quality of life and its positive economic impact, including attracting visitors who support local retail and service industries such as ours. Trails can also provide healthy, safe connections for recreation and access to work and services.”

-- Chris & Jim MacInnes, Owners

Excerpt from letter of support dated February 22, 2022



“This project would build community unity in Thompsonville, provide an additional recreational destination in the region and the project will also create building blocks for the community's future. We strongly support this grant application and urge your favorable consideration of this request.”

*-- Scott Tucker, Superintendent
Sleeping Bear Dunes National Lakeshore*

Excerpt from letter of support dated December 13, 2021



“The community as a whole benefits greatly from the trail's presence both from a health and wellness advantage, but also as a significant economic driver for our region. Paving the remaining 12 miles of the trail will serve as a catalyst for expanded benefit for everyone young and old, residents and visitors alike. We are so fortunate to have the Betsie Valley Trail in our backyard and truly appreciate the exceptional work that makes it a reality.”

-- Rick Schmitt, Co-Owner

Excerpt from letter of support dated January 24, 2022



Please Support the Friends of the Betsie Valley Trail

Whether you're a casual or devoted user,
or a local business – please help make this
important community asset more beautiful
and accessible for all!

Visit our website to volunteer or donate:

BetsieValleyTrail.org



BETSIE
VALLEY
TRAIL

